

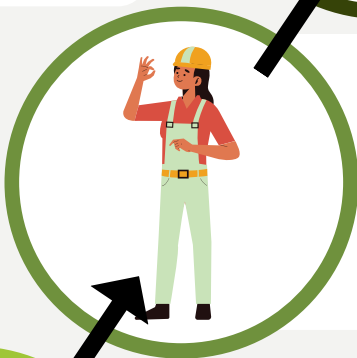
FOREST ECONOMY

Data for Montgomery, Polk,
and Sevier Counties

The average annual forest compensation is **\$147,045**, or **141%** of the three counties' average



\$35,765,845
added to the
state GDP



589 jobs and
\$27,993,431
in labor income



62,878,339
tons of standing
timber



1,099,683 acres
of forest
78% of land area



Data are from USDA Forest Service and IMPLAN

Scan the QR code or visit our website:

www.uamont.edu/academics/CFANR/acfb.html

Contact us at forestbusiness@uamont.edu

