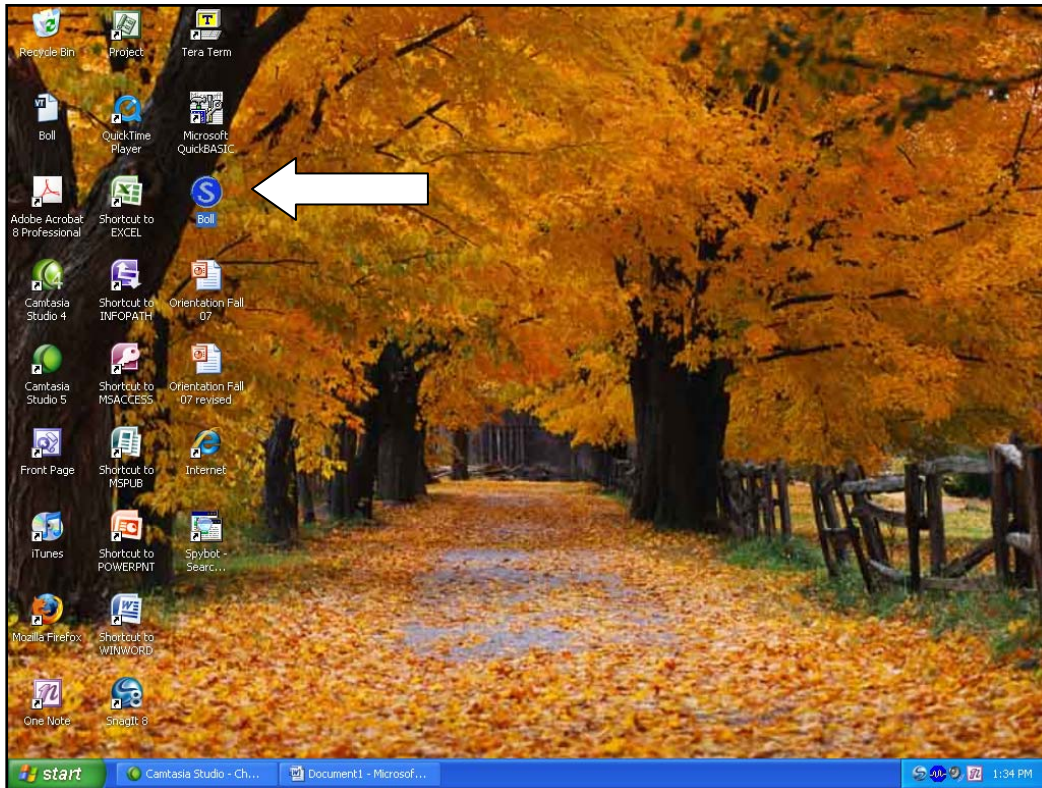
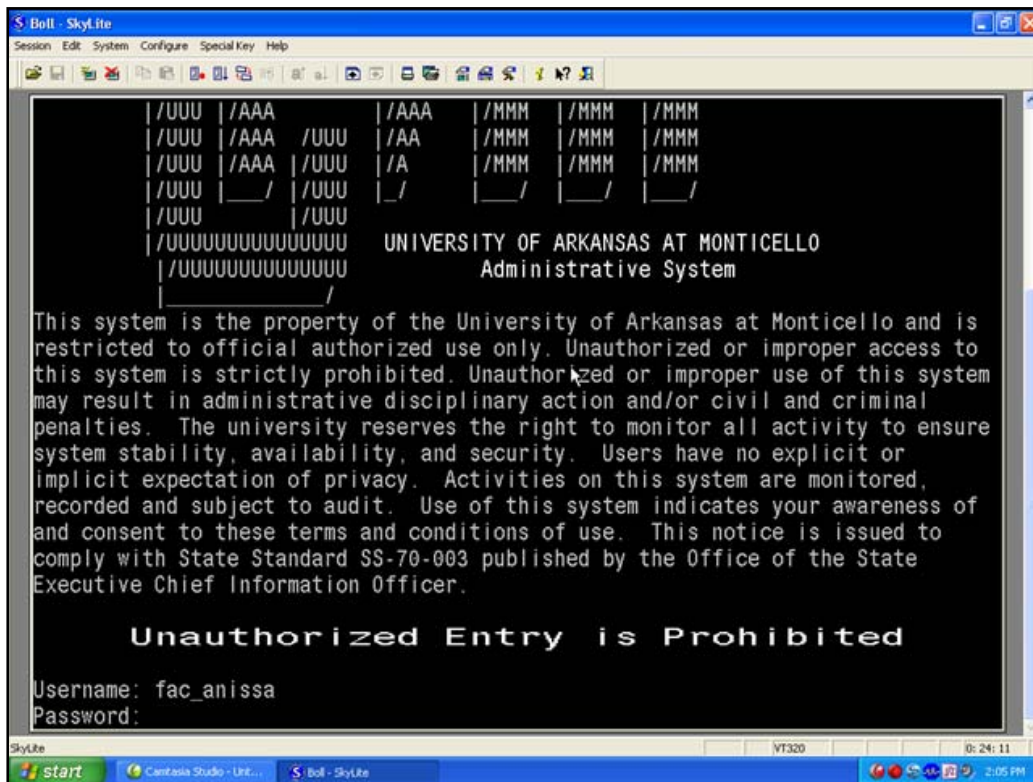


How To Change Your Password using Skylite

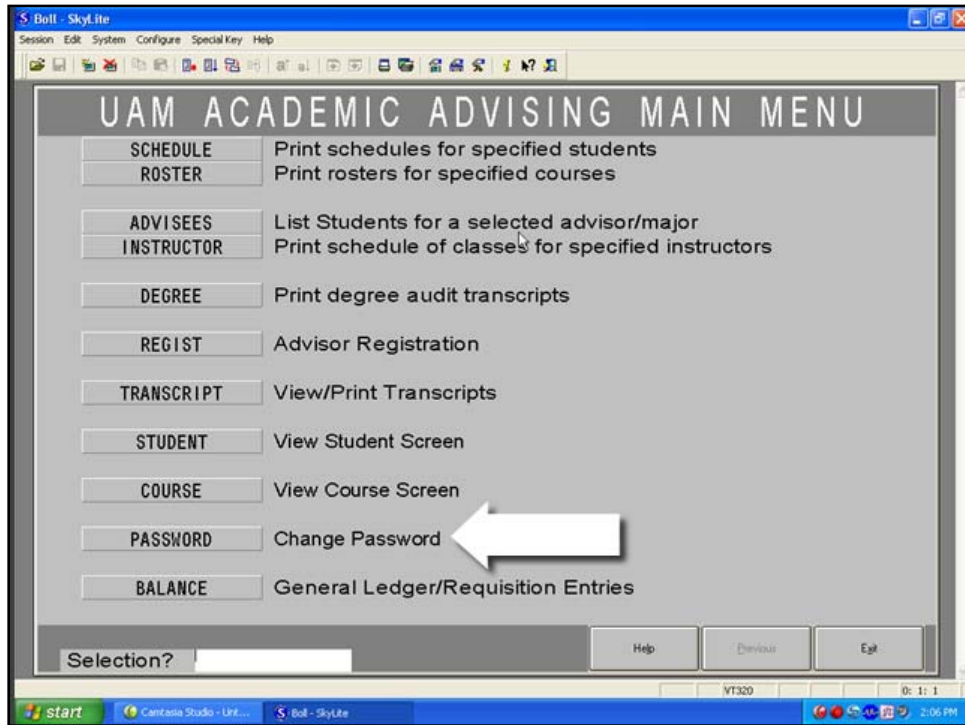
Open **Boll** using **Skylite**.



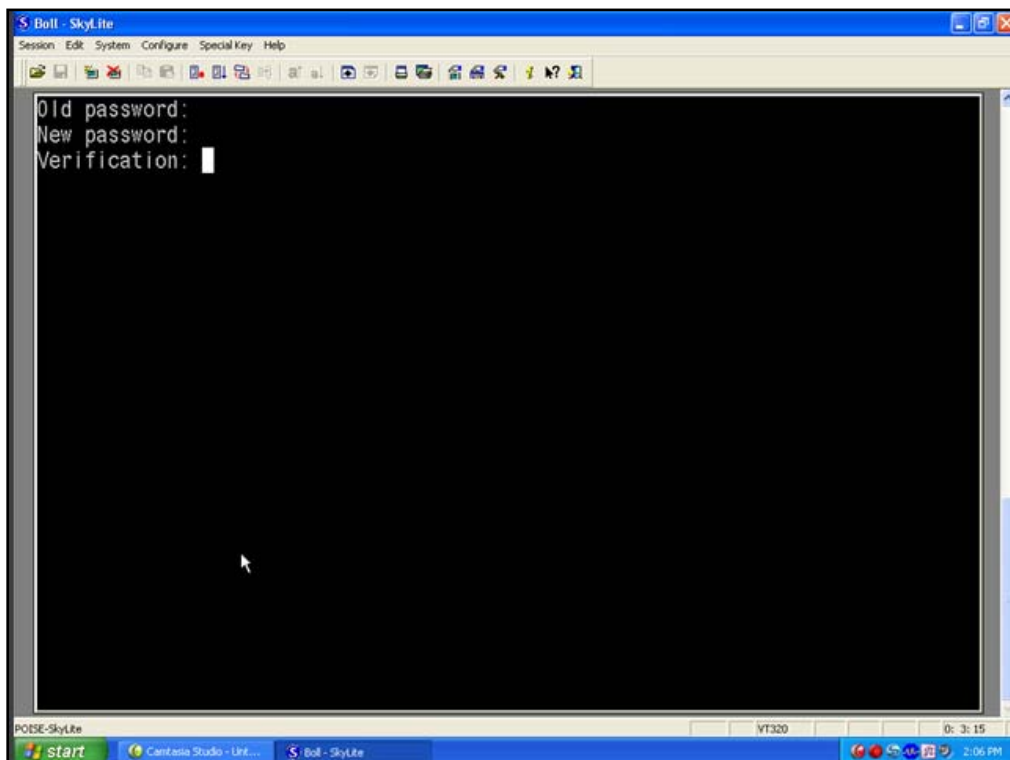
You should be at the login screen. Enter your **Username** and **Password** then hit **Enter**. When typing your password, you will not be able to see what you're typing. If you feel that you've made a mistake, strike **Backspace** a number of times, perhaps a bit more than necessary.



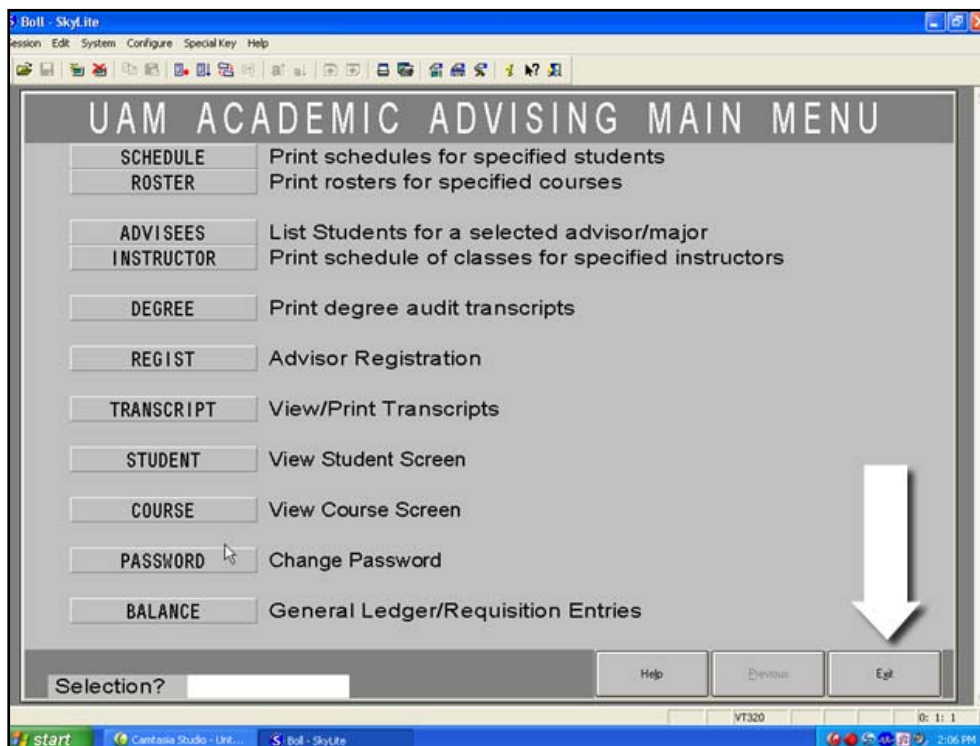
You are now at the main menu. Click on the **Password** button that has Change Password to its right.



Enter your **Old Password** (the password you logged in with), your **New Password** (what you would like it to be), and a **Verification** of your new password. The text that you enter will not be shown. If you feel that you've made a typing error, strike the **Backspace** key a number of times. When you are finished, hit **Enter**.



You have successfully changed your password and are back at the menu screen. If you have no other business to be done in Boll, you may **Exit** the program.



You have completed this online tutorial.

Questions? Call 870-460-1820