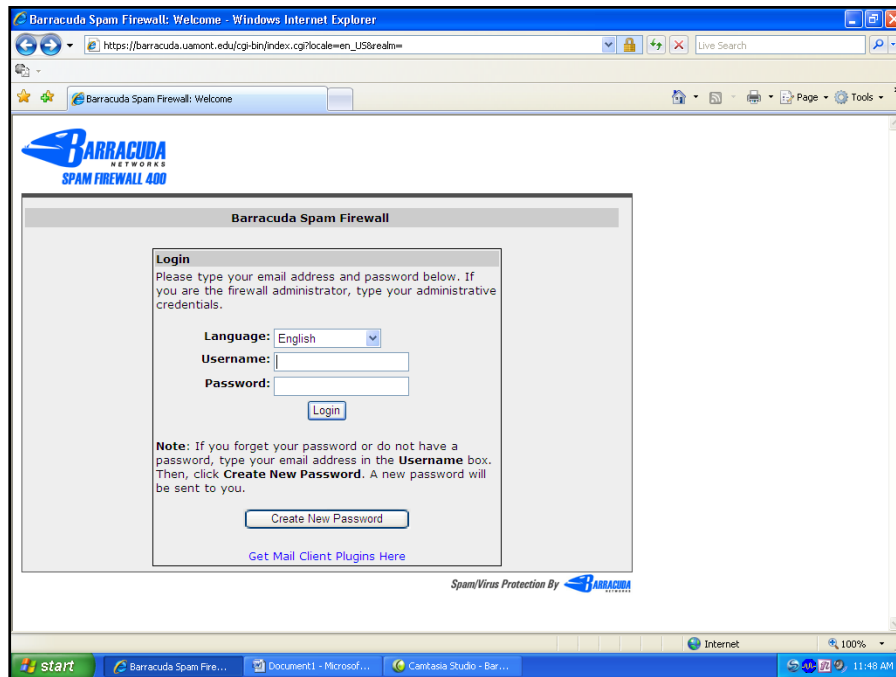
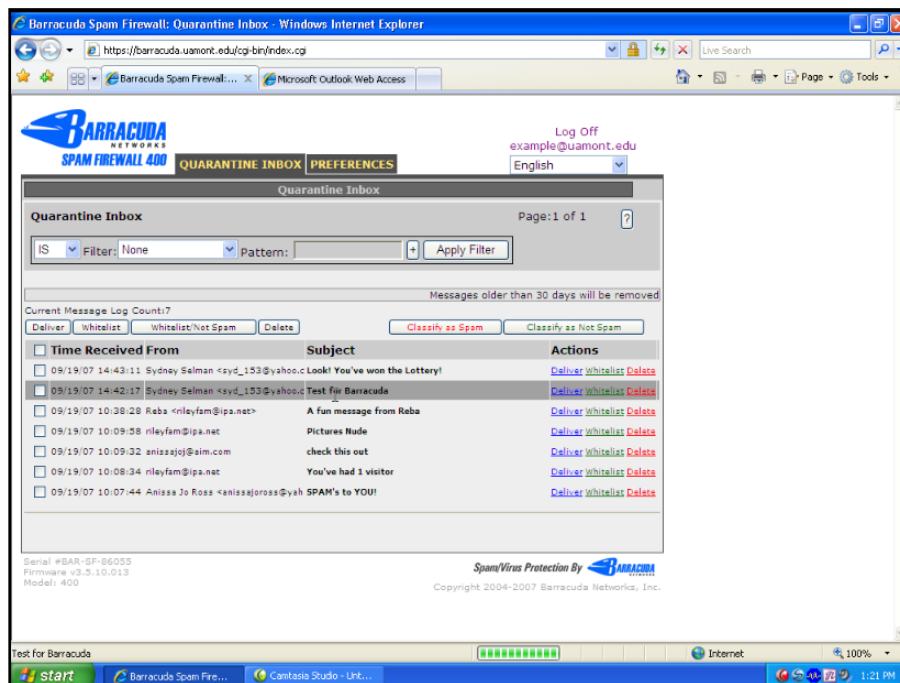


How to Classify E-mail Messages as Spam or Not Spam in Barracuda

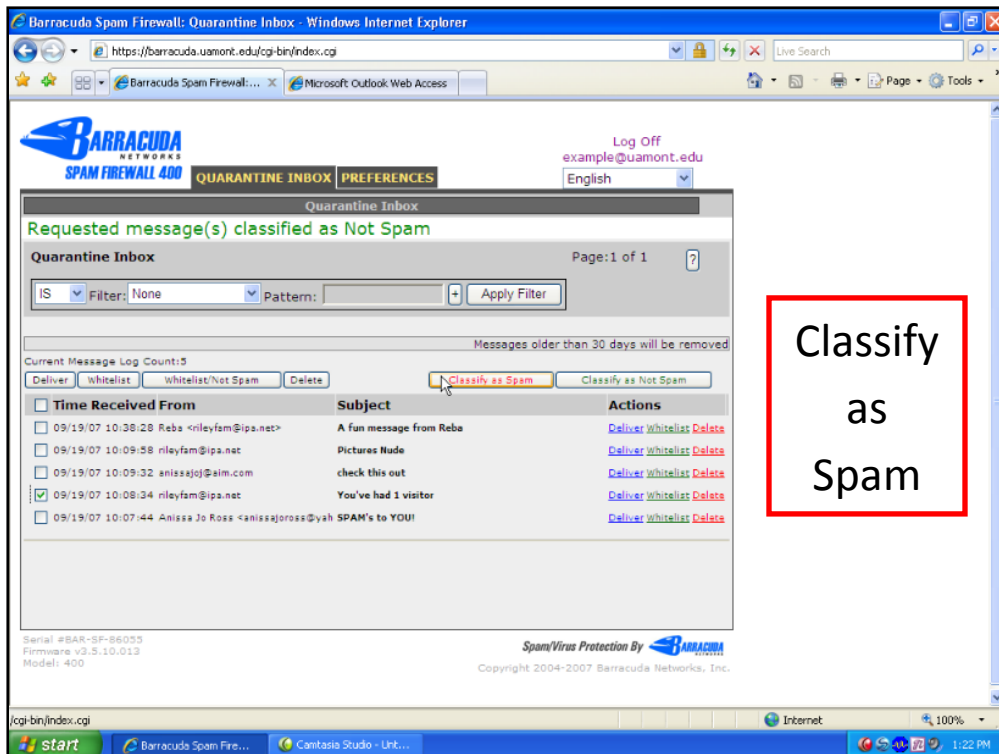
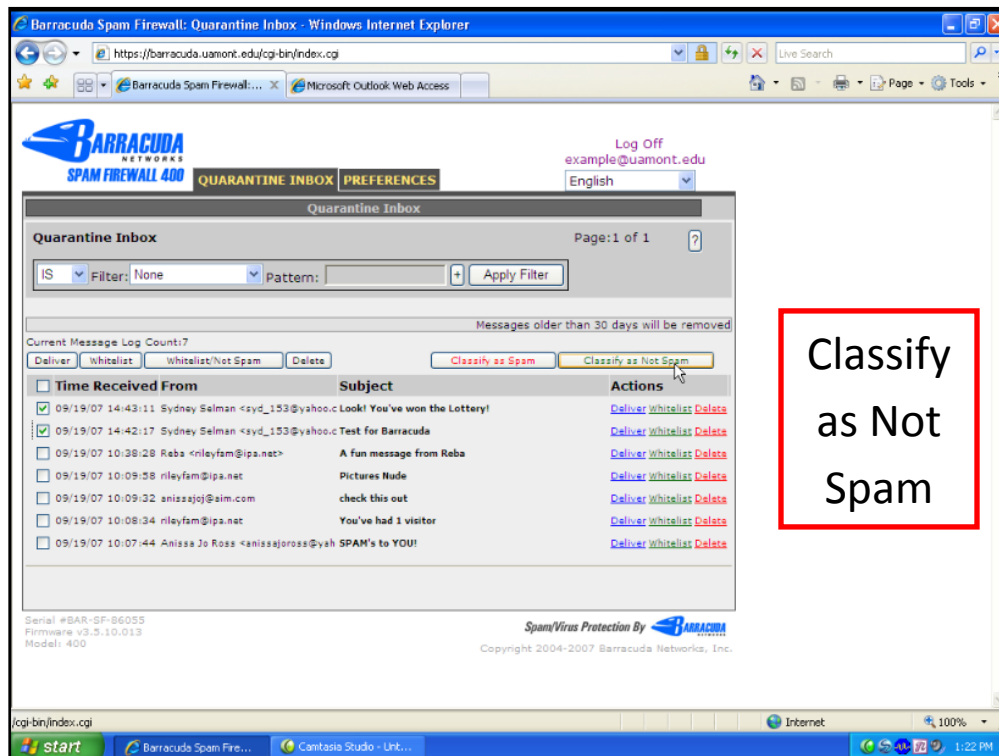
First, log in to Barracuda.



You should now be viewing your e-mails and your screen should look similar to the screen below.



To classify a message as Spam or Not Spam, simply click the check box to the left of the message and click on **Classify as Spam** or **Classify as Not Spam**.



You have successfully completed this online tutorial.

Questions? Call 870-460-1820